


[← Back](#)

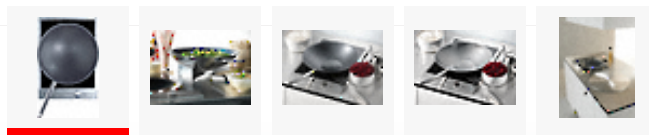
CS 1223-1 I

Electric CombiSet with induction including a wok pan for oriental cuisine.

- Professional design - Ceramic glass with frame, 380 mm wide
- Special - inset wok recess
- Easy and direct controls - operation via metal rotary dial control
- Powerful - booster function
- Very convenient, safe - operating and residual heat indicator







[More product information](#)

Price: **HK\$ 36,000***
Hong Kong retail price

[> Find a dealer](#)
 [Save & Compare](#) [> Appliance visualiser](#)

[Benefits](#)
[Product details](#)
[Downloads](#)
[Support & Service](#)
[Accessories](#)
[Miele Cleaning products at a glance](#)

Product details - CS 1223-1 I

Heating type ^	
Heating type	Induction
Construction type ^	
CombiSet element	• i
Design ^	
Print design	LightPrint
All-round stainless steel frame	•
Miele logo embossed in stainless steel	•
Ring details ^	
No. of rings	1
Ring ^	
Position	Centred
Type	Wok burner
Diameter in mm	Ø 300
Power rating in W	2400
Booster in W	3200
User convenience ^	
Operation via knobs	• i
AutoBoost	• i
Indicators ^	
Residual heat indicator for every ring	• i
Digital power level display	•
Efficiency and sustainability ^	
Residual heat utilisation	• i
Cleaning convenience ^	
Easy to clean ceramic surface	• i

Safety ^	
Safety cut-out	• 
Lock function	• 
System lock	• 
Fault monitoring	•
Integrated cooling fan	• 
Overheating protection	• 
Residual heat indicator	• 
Technical data ^	
Dimensions in mm (width)	380
Dimensions in mm (height)	115
Dimensions in mm (depth)	520
Built-in height with mains connection box in mm	115
Cutout dimensions in mm (width)	364
Cutout dimensions in mm (depth)	500
Weight in kg	8
Voltage in V	230-240
Fuse rating in A	16
Number of phases	1
Cable length in m	2,0
Standard accessories ^	
Connection cable	•
Coated wok pan	•