

Designed to simplify



6th sense Simply Cozy



全港銷量[#] no.1 抽濕機

根據業界認可7/2012-6/2013 零售市場銷售報告

抽濕機系列 Dehumidifier Series

DEHUM1412 (CF61) 惠而浦乃美國惠而浦 Whirlpool, U.S.A. 的註冊商標。Whirlpool is a registered trademark of Whirlpool, U.S.A. 版權所有 翻印必究 All Rights Reserved.



立即下載 Scan to download
www.whirlpool.com.hk



星級服務 STAR SERVICE

查詢熱線 Star Hotline
香港 Hong Kong : 2406 9138
澳門 Macau : 0800157
送貨查詢熱線 Delivery Hotline : 2407 3126



惠而浦獻上365日的關心 體貼所需

WHIRLPOOL BRINGS YOU MODELS THAT FIT YOUR NEEDS ALL YEAR ROUND PERFECTLY



壓縮式抽濕機和熱石式抽濕機兩者應如何選擇？

可以從溫度及環境方面作考慮：

- 壓縮式抽濕機以蒸發器和冷凝器利用溫差把空氣中的水份凝結並收集至水箱，而乾燥空氣於散熱管排出。在室溫高的時候，如夏天的日子，抽濕能力特高。另外，面積較大如客、飯廳、近海或潮濕地區均適合使用。
- 熱石式抽濕機利用熱石吸收空氣中的水份，以加熱器把水份凝結及收集，把乾燥空氣排出。在溫度較低的情況下抽濕表現能力佳，如春、秋和冬天。此類抽濕機大多設計輕巧，噪音低，放置於房間或浴室較為合適。
- 惠而浦的壓縮式及熱石式抽濕機系列，能抽濕、乾衣和淨化空氣，其抽濕量由7公升高至32公升，而且機身纖巧，無論空間有多大或小，都總有一款合你心意。

How should we choose between compressor type and desiccant type dehumidifiers?

Considering from the perspectives of temperature and environment:

- Utilizing temperature difference, a compressor type dehumidifier uses its evaporator and condenser to condense water in the air and then collect it to the water tank, when dry air is discharged via the condenser. During hot weather such as in summer, dehumidifying capacity can be maintained at a high level. This is particularly suitable for use in large areas such as living rooms, dining rooms, offshore and very humid places.
- A desiccant type dehumidifier uses zeolite to absorb water in the air, condenses the water with the heater, collects it and discharges dry air. Its dehumidifying performance is optimized when temperature is low, such as during spring, autumn and winter. Since it is slim with low noise level, it is particularly suitable for use in bedrooms and bathrooms.
- Featuring slim design, Whirlpool's compressor type and desiccant type dehumidifiers can dehumidify, dry garments and purify air with a capacity ranging from 7 litres to 32 litres. There should be a model that can fit the size of your place perfectly.

三合一壓縮式抽濕機 迅間鎖水 抽濕 乾衣 淨化空氣

3-IN-1 COMPRESSOR TYPE DEHUMIDIFIER

INSTANTLY DEHUMIDIFY, DRY CLOTHES & PURIFY AIR



第6感智能除濕技術

惠而浦第6感智能除濕技術，配合150°全方位送風功能，便可輕易偵測濕氣位置，鎖定抽濕目標，自動調節送風角度，快速抽乾潮濕範圍。

6th Sense Intelligence Dehumidifying Technology

Whirlpool's 6th Sense Intelligence dehumidifying technology together with the 150° wide area airflow detect the position of humid places, select the target and automatically adjust airflow direction, quickly dehumidify humid areas.



第6感智醒眼 鎖定水份 迅速乾衣

6th Sense Smart Eye Select Target Quick Drying

惠而浦抽濕機型號SS229的第6感「智醒眼」配合150°全方位送風功能，只需三個步驟，就能準確地偵測濕氣位置，自動調節送風角度，快速抽乾衣物或潮濕範圍。

The Whirlpool dehumidifier model SS229's 6th Sense Smart Eye detects and pinpoints wet clothes and water spills in just 3 steps, together with its 150° super wide auto swing louver delivering airflow, and drying the detected areas, particularly clothing, effectively and evenly.



150°廣角送風 效果透徹均勻

150° Super Wide Airflow Delivers a Thorough & Even Effect

惠而浦抽濕機設有三段上下風向選擇，送風範圍廣至150°，能向前上方作75°擺動，前下方作75°擺動或150°廣角擺動送風。

Whirlpool dehumidifier motorized louver has an airflow swing span of 150° vertically. There are 3 swing ranges which are front-up 75°, front-down 75° and wide airflow 150°.

三段送風選擇 3 Swing Ranges



第6感智能除濕技術 3步全效 抽濕

6TH SENSE INTELLIGENCE DE HUMIDIFYING TECHNOLOGY COMPLETE DEHUMIDIFICATION IN 3 STEPS



步驟 1 掃描

Detection and Scanning

「智醒眼」感測上下150°、左右70°範圍內局部濕度，以左右來回、上下來回方式掃描，以判斷濕衣服的位置。

“Smart Eye” senses the temperature of surroundings within the range of 150° vertical and 70° horizontal in a horizontal back-and-forth and vertical back-and-forth motion to determine the position of wet clothes.



步驟 2 鎖定目標

Selection and Focus

依據掃描階段所得的濕衣服範圍而鎖定目標。

According to the scan result, focus on the location of wet clothes.



廣角乾衣 Wide Angle Drying



窄角乾衣 Narrow Angle Drying



步驟 3 乾衣

Drying

衣物較少或集中時，左右及上下導風板固定或呈窄角擺動；衣物較多或範圍較大時，導風板則呈廣角擺動。

The horizontal and vertical louvers will be fixed or in a narrow angle when clothes are less. Louvers will swing in wide angles when clothes are more or in large area.

多功能過濾系統

MULTI-FUNCTIONAL FILTRATION SYSTEM

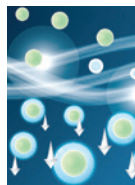


多功能過濾系統

Multi-functional filtration system

惠而浦多功能過濾系統專為不同人士需要而設，能有效過濾空氣中微小的細菌和其他有害物質，令空氣質素提升。

Whirlpool's filtration technology filters out tiny harmful substances and bacteria in the air. Its unique filtration functionality is tailor-made and designated for different needs, and ultimately leads to high level of air purify.

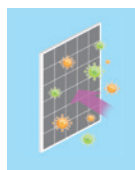


負離子淨化裝置

Ionizer

- 淨化空氣中小至毫米程度的微塵
Purify the dust as tiny as millimeter

(不適用於 Inapplicable to: SS319)

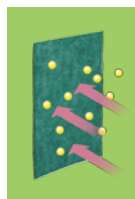


可清洗前置納米銀濾網

Washable Nano Silver Pre-filter

- 率先阻隔空氣中體積較大的污染物
Filter out bigger particles and pollutants

(不適用於 Inapplicable to: SD007)

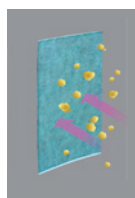


三合一兒茶素活性炭除臭過濾網

3-in-1 Catechin Filter

- 具環保抗菌及除臭功能
Excellent antiviral and deodorizing properties
- 去除異味：氨氣87.6%，硫化氫88.2%，乙酸82%
Remove odors: 87.6% Ammonia, 88.2% Hydrogen Sulfide and 82% Acetic Acid¹

(適用於 Applicable to: SS226, SS229)

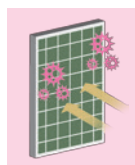


二合一活性炭除臭過濾網

2-in-1 Deodorizing Charcoal Filter

- 有效去除家中難聞氣味
Effectively remove undesirable smells
- 吸附有害化學物質
Absorb harmful chemicals
- 除臭，阻隔異味
Deodorize

(適用於 Applicable to: SS160, SS289, SS319)



銀離子過濾網

Silver Ion Filter

- 有效過濾花粉及致敏原
Effectively filter pollens and allergens

(適用於 Applicable to: SD007)

¹ 測試來源：日資供應商研發中心

Test Origin: Japanese R & D Centre

專業設計 盡顯貼心

SPECIALLY DESIGNED FEATURES FOR EXTRA CARE



172mm 纖巧機身 易於收藏

172mm Slim Design

惠而浦壓縮式抽濕機，機身闊度僅172毫米，絕不浪費室內空間，而且備有活動輪，方便移動。而惠而浦熱石式抽濕機僅重6公斤，比市面上機身輕盈，方便搬動，轉換位置。

Whirlpool's compressor type dehumidifier occupies only very little space as the width of its body is only 172mm. Whirlpool's desiccant type dehumidifier is only 6kg in weight, which is lighter than other similar types available in the market. Now you can move it around easily and change its position conveniently.



一級能源標籤 環保慳電

Grade 1 Energy Efficiency Label

惠而浦全新直流馬達設計抽濕機，更慳電，更環保。榮獲一級能源標籤，能以較少的電力發揮強勁的抽濕力。

Whirlpool's newly designed direct current motor dehumidifiers save even more energy. They are awarded with Grade 1 Energy Efficiency Label and can produce a stronger dehumidifying effect while using less electricity.

(不適用於 Inapplicable to: SD007, SS319)



前置式過濾網
Front Load Filter

全新機側濾網設計，過濾網設於機身側面，方便隨時更換。

The newly designed lateral filter is fitted on the side of the machine to facilitate replacement.



特大抽濕量

Extra Large Dehumidifying Capacity

產品 (SS319) 備有高達每天32公升的抽濕量，配有容量9公升的水箱，以滿足大家庭用戶需要。

Product (SS319) boasts a staggering dehumidifying capacity of 32L/day. Its 9L water tank easily caters to the demand of larger homes.



香薰匣 驅走霉味

Odor-removing Fragrance Box

SS160 及 SS289抽濕機出風口位置特別加裝香薰匣，將香薰油滴在海綿上，開啟抽濕機時，清幽芬芳的香氣洋溢四方，驅走屋內的霉味。

Models SS160 and SS289 are equipped with a specially developed fragrance box near the air outlet, filling your home with a delightful aroma on humid days.



連續排水
Continuous Drainage

隨機附送長達2米排水喉，配合連續排水功能，免卻清倒水箱的麻煩。

Equipped with a 2m long drainage hose which allows for continuous drainage without the trouble of emptying the water tank.



熱石式抽濕機 浴室乾衣無難度

DESICCANT TYPE DEHUMIDIFIERS MAKE GARMENT DRYING AN EASY TASK



IP 21認證 可於浴室使用*

IP 21 Certification Suitable For Use in Bathrooms

IP21防水滴設計，適合潮濕環境下使用。抽濕機放於浴室，不但可抽走沐浴期間產生的霧氣，其排出的乾爽暖風，更可令浴室更溫暖舒適。

The IP21 design makes the dehumidifier suitable for use in humid environment. It can exhaust mist produced in bathrooms and discharge dry and warm wind, making them warmer and more comfortable.

* 適合潮濕空氣或少量水滴下使用 suitable for use in humid environment or small amount of drip



乾衣速度 快20分鐘

Garment Drying Speed Improved by 20 minutes

本地認可大學實驗證實SD007乾衣速度非常顯著，乾2公斤衣物只需70分鐘*，速度較壓縮機快20分鐘。

As verified by experiments conducted by a locally recognized university, the garment drying speed of SD007 is very outstanding. It only takes 70 minutes* to dry 2kg of garments, which is 20 minutes faster than compressor type machines.

* 於2014本地大學認可研究中心測試，室內溫度為20°C及相對濕度為60%，在65立方米空間內，與一般20公升抽濕機作比較。

Conducted in the research centre of a locally recognized university in 2014, room temperature is 20°C and relative humidity is 60% in a 65m³ areas, comparing with general 20L dehumidifiers.



內部乾燥 防止霉菌滋生

Internal Drying to Prevent Mildew Breeding

SD007備有內部乾燥功能，即使關掉抽濕機，內置的風扇設計仍可吹乾機器內部的濕氣，保持乾爽，防止霉菌滋生，同時亦能加速冷卻機器內盛存的熱氣，令機件更耐用。

Model SD007 provides the internal drying function that uses its built-in fan to remove moisture in the machine even when it is not in operation. It thus effectively prevents the breeding of mildew by keeping the machine dry and protects the machine from high temperature after operation.



抽濕機系列產品規格

DEHUMIDIFIER SERIES PRODUCT SPECIFICATION



型號 Model	SD007	SS160	SS226	SS229	SS289	SS319
抽濕量 (公升 / 每日) Capacity (Liters / day)						
廠方標準 (溫度20°C及濕度60%) Manufacturer's standard (20°C, RH60%)	7.0	-	-	-	-	-
廠方標準 (溫度30°C及濕度80%) Manufacturer's standard (30°C, RH80%)	-	16.0	20.0	20.0	24.0	32.0
能源標籤標準 (溫度26.7°C及濕度60%) MEEL capacity (26.7°C, RH60%)	-	7.9	12.1	12.1	13.6	18.0
能源標籤 MEELS	-	1級 / Grade 1	1級 / Grade 1	1級 / Grade 1	1級 / Grade 1	2級 / Grade 2
功能 Features						
自選濕度控制 Humidity control selector	•	•	•	•	•	•
濕度顯示器 Humidity status indicator	-	•	•	•	•	•
第六感智能系統 6 th Sense Intelligence	-	-	-	•	-	-
時間掣 (小時) Timer (hours)	2 / 4 / 8	2 / 4 / 8 / 12	2 / 4 / 8 / 12	2 / 4 / 8 / 12	2 / 4 / 8 / 12	-
速度調較 Speed selection	低 Low / 高 High / 自動 Auto	•	•	•	•	-
多角度自動送風 Automatic swing	•	•	•	•	•	-
150度廣角送風葉 Wide angle louver (150°)	•	-	•	•	-	-
左右送風葉 Horizontal louver	•	-	-	•	-	-
快速乾衣 Rapid laundry function	極速 Turbo / 節能 Saving	•	•	•	•	-
連續排水 Continuous drainage	•	•	•	•	•	•
水滿指示燈 Water full indicator	•	•	•	•	•	•
水滿自動停止 Water full shut-off	•	•	•	•	•	•
其他功能 Other Features						
香薰匣 Fragrance box	-	•	-	-	•	-
手提式裝置 Carry handle	-	•	-	•	•	•
活動輪 Casters	-	•	•	•	•	•
內部乾燥 Internal drying	•	-	•	•	-	-
IP21 防水滴功能 IP21 design	•	-	•	•	•	•
自動除霜功能 Auto defrost function	-	•	•	•	•	•
空氣淨化功能 Air-purifying Functions						
負離子空氣淨化 Ionizer	•	•	•	•	•	-
可清洗前置納米銀濾網 Washable Nano Silver Pre-filter	-	•	•	•	•	•
銀離子過濾網 Silver Ion Filter	•	-	-	-	-	-
三合一兒茶素活性碳除臭過濾網 3-in-1 Catechin Filter	-	-	•	•	-	-
二合一活性碳除臭過濾網 2-in-1 Deodorizing Charcoal Filter	-	•	-	-	•	•
規格 Specifications						
水箱容量 (公升) Water container capacity (L)	2.5	4.5	4.5	4.5	5.5	9.0
防溢裝置容量 (公升) Overflow protection capacity (L)	2.2	4.0	4.0	4.0	5.0	7.6
淨重 (公升) Net Weight (kg)	6.1	10.7	11.8	11.8	12.0	18.1
體積 (深x闊x高) 毫米 Product dimensions (DxWxH) mm	320 x 212 x 476	387 x 172 x 517	387 x 172 x 574	387 x 172 x 574	220 x 420 x 600	381 x 328 x 625